



Miesville Ravine Park Reserve Concept Prioritization

Kurt Chatfield, Planning Manager
Sarah Evenson
HKGi

1

Overview



- Highlights from Community Feedback
- Revisions to Vision and Guiding Principles
- Confirm 5-year, 10-year, and Long-term Concepts
- Identify 5-year and 10-year implementation priorities
- Feedback on Interpretive Framework
- Questions/Comments

2

Community Feedback



- Keep park as natural as possible
- Explain some of the history of the area and provide self-guided interpretation
- Provide drinking water
- Offer loop trail opportunities and more trails throughout the park reserve, along with a connection to the CVT
- Make more amenities/experiences inclusive/accessible
- Improve water access and fishing opportunities
- Provide picnicking and camping along the Cannon River

3

County Board Direction



Focus on natural resources, minimal recreation development

10 Year Priorities

- Natural Resources: restore and manage additional 200 acres over 10 years (60%). Long term restoration of entire park
- Improve Cannon River access on County land
- Limited ADA accessible facilities: integrate into use areas; ½ mile trail
- Drinking water
- Trails: Up to 11 miles
- New trailheads: North Trout Brook, Bluff Prairie

Long term: rustic camping, trail bridge over Cannon River, boat launch and picnicking on current inholding property

4

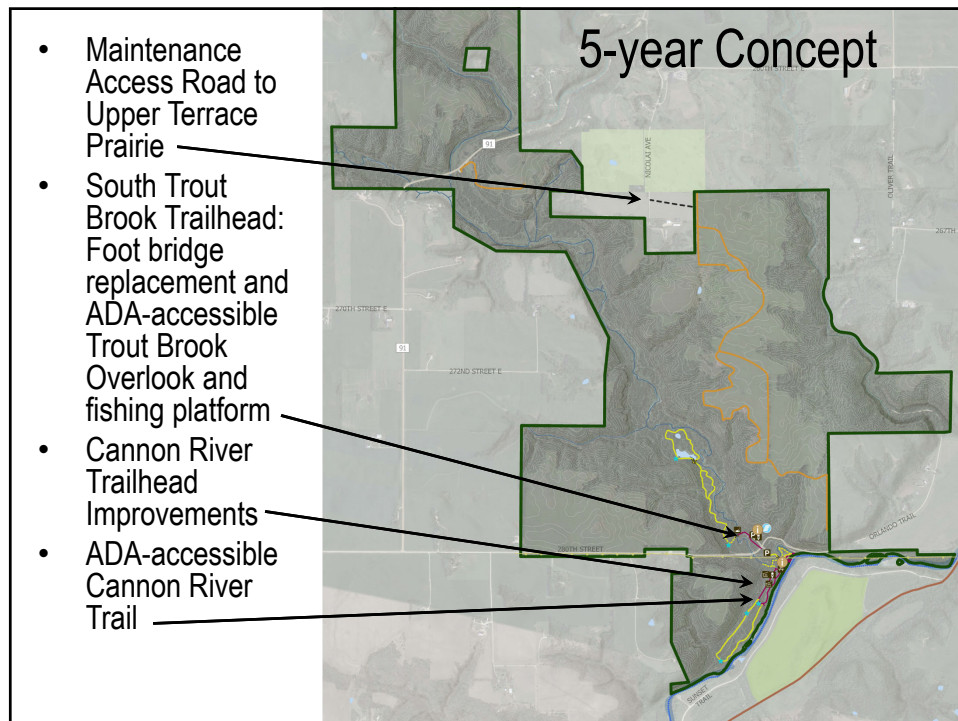
Vision and Guiding Principles



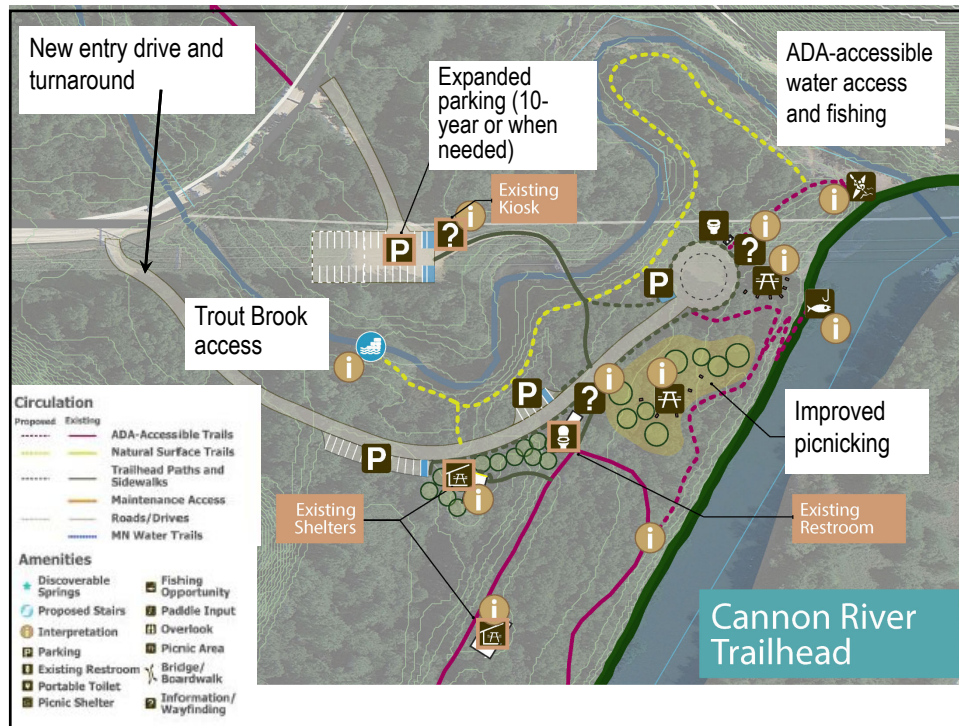
Protecting Habitats and Connecting People to the Wonders of the Natural World

1. Compliment the rustic setting and provide a strong sense of arrival with entry improvements
2. Strike a harmonious balance between landscape preservation and human use
3. Celebrate the park reserve's rugged setting while making it more inclusive
4. Protect vulnerable and imperiled habitats
5. Embrace the Cannon River
6. Enhance connection to the Cannon River Valley
7. Highlight the upland terrace prairie
8. Recognize those who have stewarded this land for generations
9. Keep the park picturesque

5



6



7

10-year

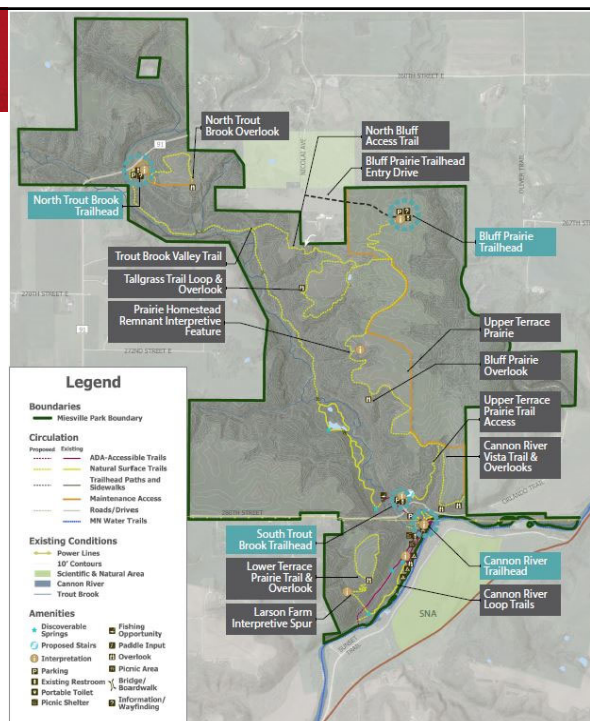
2 New Trailheads

- North Trout Brook
- Bluff Prairie

11-mile trail network with access to habitats

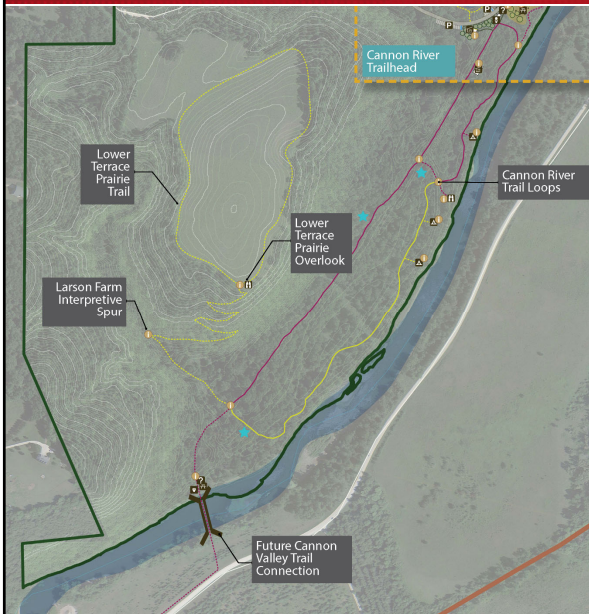
- Lower Terrace Prairie
- Trout Brook Valley
- North Trout Brook
- Upper Terrace Prairie

Three Cannon River campsites



8

Cannon River Area



Ten - year

- Riverside loop trails with overlook
- Natural surface trail up to Lower Terrace Prairie provides a prairie experience
- Limited camping

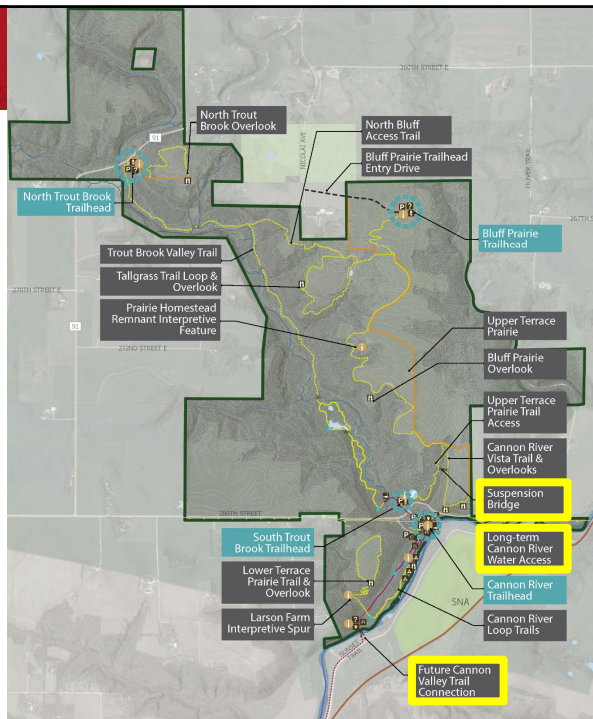
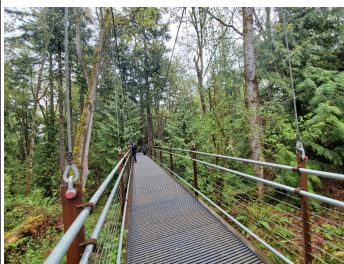
Long Term

- ADA-accessible trail along former RR bed connects to the Cannon Valley Trail

9

Long-term

- Connection to Cannon Valley Trail
- Ravine Suspension Bridge
- East Cannon River Water Access & Picnic Area

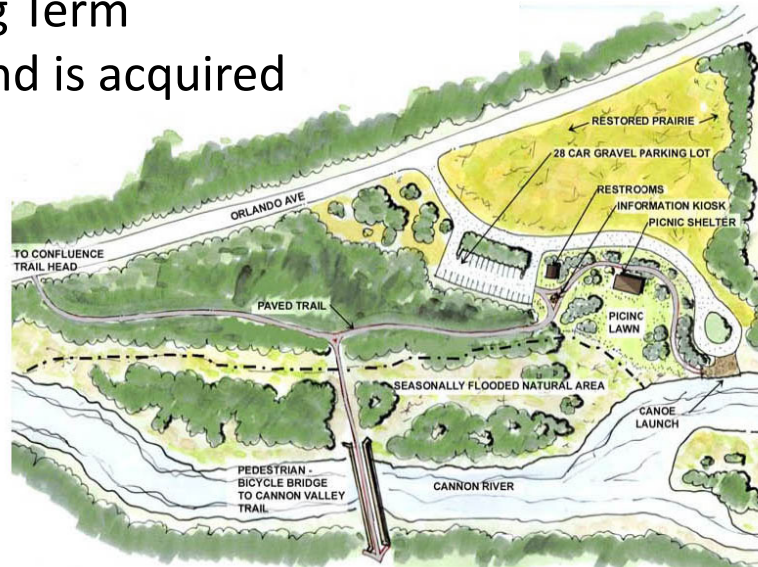



10

East River Access & Picnic Area



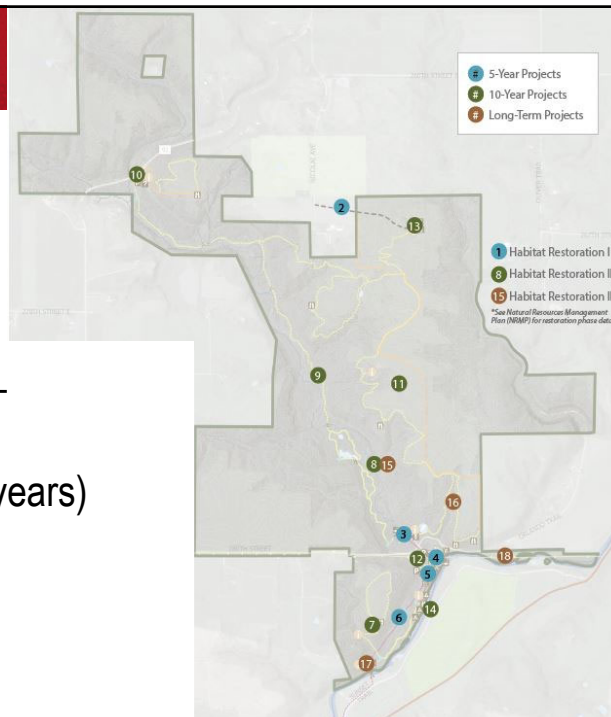
- Long Term
- If land is acquired



11

Prioritization

- 5-year target:
 - \$1.2 million - \$1.86 million
- 10-year target:
 - \$1.86 million - \$6 million
- Long-term (10+ years)



12

5-year Priorities



	Description	Project Number	County Funding Assumption	External Funding Assumption	Running Total of County Costs	
5-Year	Habitat Restoration I	1	\$ 190,000	\$ 689,000	\$ 190,000	5-YEAR TARGET \$1.2 to 1.86 MILLION BOTTOM OF 5-YEAR
	Bluff Prairie Natural Resource Management Access Road	2	\$ 110,000		\$ 300,000	
	Trout Brook Valley: Trout Brook footbridge replacement with ADA-accessible overlook and fishing platform, Southbrook Trailhead improvements	3	\$ 229,000		\$ 529,000	
	Cannon River Trailhead and Boat Launch: Drinking water, ADA-accessible kayak launch, improved riverside picnicking (additional picnic tables and grills), trailhead sidewalks and paths	4	\$ 667,000		\$ 1,196,000	
	Cannon River Trailhead: Accessible shore fishing, Trout Brook touch point and rest area, restored savanna picnicking	5	\$ 146,000		\$ 1,342,000	
	Cannon River ADA-accessible trail loop	6	\$ 303,000		\$ 1,645,000	
	5-year Anticipated Cost:		\$ 1,645,000	\$ 689,000	\$1,645,000	

13

10-year Priorities



	Description	Project Number	County Funding Assumption	External Funding Assumption	Running Total of County Costs	
10-Year	Cannon River Area trails: Larson Farm interpretive spur, Lower Terrace Prairie natural surface trail loop and overlook	7	\$ 359,000		\$ 2,004,000	10-YEAR TARGET \$1.86 to 6 MILLION BOTTOM OF 10-YEAR
	Habitat Restoration II and Trout Brook Restoration I	8	\$ 260,000	\$ 1,055,000	\$ 2,264,000	
	Trout Brook Valley trail: natural surface trail with boardwalk sections, spring destination rest areas, and bridge crossings	9	\$ 810,000		\$ 3,074,000	
	North Trout Brook Trailhead and overlook trail	10	\$ 559,000		\$ 3,633,000	
	Upper Terrace Prairie trails: Upper Terrace Prairie Trail access from South Trout Brook Trailhead, Bluff Prairie Trail, Cannon River Vista trail and overlooks, Prairie homestead remnant interpretive feature	11	\$ 1,220,000		\$ 4,853,000	
	Existing Cannon River Trailhead parking lot expansion	12	\$ 34,000		\$ 4,887,000	
	Bluff Prairie Trailhead: public entry drive, parking, North Bluff access trail, Tallgrass trail loop	13	\$ 1,008,000		\$ 5,895,000	
	Riverside campsites (3)	14	\$ 14,000	\$ 14,000	\$ 5,909,000	
	10-year Anticipated Cost:		\$ 4,264,000	\$1,069,000	\$5,909,000	

14

Long-term Priorities



	Description	Project Number	County Funding Assumption	External Funding Assumption	Running Total of County Costs
Long-term	Habitat Restoration III and Trout Brook Restoration II	15	\$ 884,000	\$ 4,811,000	\$ 6,793,000
	Ravine suspension bridge	16	\$ 650,000		\$ 7,443,000
	Cannon Valley Trail connection: Bridge over cannon river, trail entry improvements	17	\$ 4,588,000	possible	\$ 12,031,000
	East Cannon River water access and picnicking	18	\$ 2,600,000	possible	\$ 14,631,000
	Long-term Anticipated Cost:			\$ 8,722,000	\$4,811,000
					Total for all phases

15

Interpretive Sub-theme 1



People: We all Thrive Here

The ravine, with its year-round water supply, and the surrounding woodlands and prairies, have attracted and sustained people and animals throughout time



16

Interpretive Sub-theme 2



Place: An Oasis for Nature

Protected and restored, the Park Reserve landscape comprises dramatic and varied topography that support many plant communities, from maple-basswood forest to dry bluff prairies, as well as cold trout streams, springs, and remnant upland bedrock bluff prairies. These natural features are an oasis replete with biodiversity.



17

Interpretive Sub-theme 3



Stewardship: Caring for the Future

Since the 1940s, people have sought to reverse some of the negative impacts of human actions and activities that have altered the landscape. Visitors today become part of the Reserve's conservation legacy when they participate in stewardship events and support conservation initiatives.



18



Questions & Comments